

GREEN RUBBER KENNEDY AG IS THE RECOMMENDED **BELT & BELT CLEANER** “SCRAPER” SUPPLIER FOR:

QCIFY

Inline Processing Systems



SALINAS

MODESTO

WATSONVILLE

GREENFIELD

www.greenrubber.com
sales@greenrubber.com



Green Rubber
Kennedy Ag
Ag & Industrial Supply

PH: 800-273-2464
FAX: 831-753-6111



SANTA MARIA

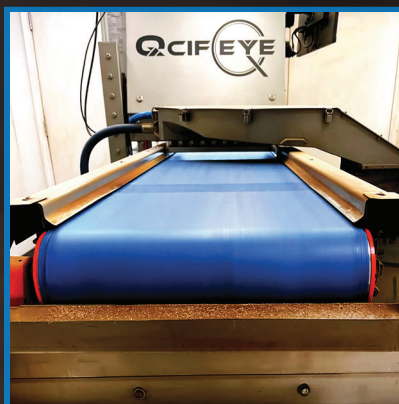
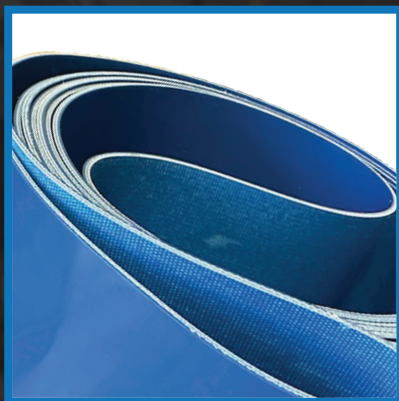
IMPERIAL

BAKERSFIELD

YUMA

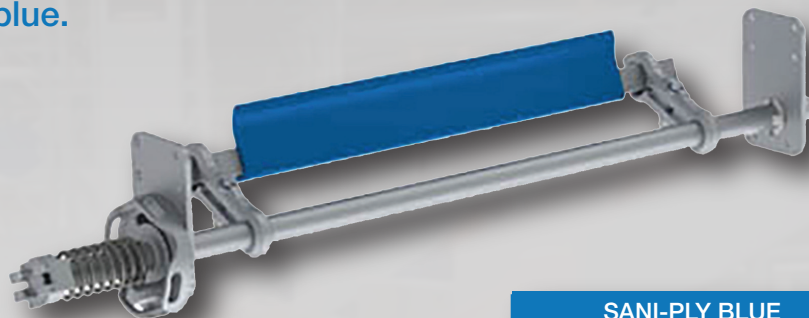
Green Rubber - Kennedy Ag

is proud to partner with **Qcify** as a recommended supplier of conveyor components such as belting and belt cleaning parts and products. Together, we have solved many industry challenges to enhance the performance of **Qcify** inline processing systems.



OPTIMAL BELT FOR QCIFEYE SYSTEMS

Green Rubber-Kennedy Ag Sani-Ply series of belts are by far the best and most widely used series of belts we carry. Made in the USA using tried and true multi-ply, spun polyester fabrics, Sani-Ply is the best for almost any application at a reasonable price. Sani-Ply meets the needs of the nut sorting industry leader, Qcify. This blue, easy clean belt with a gloss finish is more resistant to oils and can be made endless to exact lengths and are FDA compliant. Keep your belt clean with GRKA's spring loaded belt scraper for optimum performance. Available in blue, white, metal detectable blue and dual durometer blue.



| | SANI-PLY BLUE GLOSS COVER |
|--|-------------------------------|
| Number of Plies: | Two Ply Monofilament |
| Thickness: | 0.12" (3 mm) |
| Weight: | 0.75 lbs/sq ft (3.66 Kg/Sq M) |
| Maximum Width: | 72" (1829 mm) |
| Minimum Pulley or Knife Edge Diameter: | 1.50" (38 mm) |
| Load for 1% Extension: | 100 lbs/inch (17 daN/cm) |
| Standard Tension: | 1.00% |
| Continuous Operating Temperature Range: | 10°F to 180°F (-12°C to 82°C) |
| Conveying Surface: | RMV PVC, Smooth, Gloss, Blue |
| Underside: | PVC, Impregnated, Blue |
| Recommended Jointing System: | Endless |
| Alternative Splices: | Single Finger Lace |
| FDA/USDA Approved for Direct Food Contact: | Yes |
| Oil Resistant: | Yes |

SALINAS

MODESTO

WATSONVILLE

GREENFIELD

www.greenrubber.com
sales@greenrubber.com



Green Rubber
Kennedy Ag
Ag & Industrial Supply

PH: 800-273-2464
FAX: 831-753-6111



SANTA MARIA

IMPERIAL

BAKERSFIELD

YUMA